

## Gluing instruction Cubes, Balls, Half Balls



**Required quantity of glue:** 1 cartridge (310 ml) for every 3 – 4 m of joint length glued.

Use 1 cartridge for full faced bonding. This is recommending for gluing the Cubes.

**Type of glue:** elastic 1-component polyurethane adhesive cement e.g. Ottocoll P 83 and Ottocoll m 500 (Otto Chemie, Fridolfing/Germany, phone: +49 (0)8684 – 908-0, Other purchasing sources: specialist retailers or your nearest KRAIBURG representative.

**Preparation:** The surfaces must be clean, dry, even and free of grease. Check adhesion to and compatibility with plastic and painted surfaces before installation.

### Gluing Cubes without installation ground anchor

Apply adhesive cement from application pistol onto the substrate. The required layer thickness is dependent on the materials being joined. Within 10 minutes, put the upper material in place and apply contact pressure. Due to the pasty consistency of the cement, we recommend maintaining contact pressure until curing is complete. The required curing time is dependent on the layer thickness and the humidity of the ambient air.

Processing temperature: + 5°C until +40°C

Film after 20 min at 23°C

Curing time after 24 h at 23°C

**Primer for absorbent subgrade:** Designed to improve adhesion on minerals materials e.g. porous concrete is grounding recommended. e.g. OTTO primer 1225 for glue Ottocoll P 83 and M 500; for asphalt use OTTO Primer 1216 and Ottocoll P83

**Form of delivery:** Bottle 100 ml, 250 ml, 500 ml, 1000 ml

All information without guarantee, subject to change. The gluing instruction is not subject to any change service. Each current and valid from can be recalled at [www.kraiburg-relastec.com/euroflex/](http://www.kraiburg-relastec.com/euroflex/)

Seite 1 von 3

## Gluing instruction Cubes, Balls, Half Balls



**Required quantity of glue:** 1 cartridge (310 ml) for every 3 – 4 m of joint length glued.

Use 1 cartridge for full faced bonding. This is recommending for gluing the Half Balls.

**Type of glue:** elastic 1-component polyurethane adhesive cement e.g. Ottocoll P 83 and Ottocoll m 500 (Otto Chemie, Fridolfing/Germany, phone: +49 (0)8684 – 908-0, Other purchasing sources: specialist retailers or your nearest KRAIBURG representative.

**Preparation:** The surfaces must be clean, dry, even and free of grease. Check adhesion to and compatibility with plastic and painted surfaces before installation.

### Gluing the Half Balls without ground anchor:

Apply adhesive cement from application pistol onto the substrate. The required layer thickness is dependent on the materials being joined. Within 10 minutes, put the upper material in place and apply contact pressure. Due to the pasty consistency of the cement, we recommend maintaining contact pressure until curing is complete. The required curing time is dependent on the layer thickness and the humidity of the ambient air.

Processing temperature: + 5°C until +40°C

Film after 20 min at 23°C

Curing time after 24 h at 23°C

**Primer for absorbent subgrade:** Designed to improve adhesion on minerals materials e.g. porous concrete is grounding recommended. e.g. OTTO primer 1225 for glue Ottocoll P 83 and M 500; for asphalt use OTTO Primer 1216 and Ottocoll P83

**Form of delivery:** Bottle 100 ml, 250 ml, 500 ml, 1000 ml

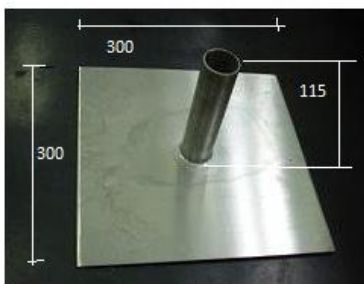


# Gluing instruction Cubes, Balls, Half Balls

## Gluing Half Balls, Balls with ground anchor



Apply the glue into the hole for the ground anchor of the Half Balls, Balls. Then take the Half Ball, Ball on top of the pre-installed ground anchor. Instead of the ground anchor the steel plate could be also used.



**The pipe must be positively glued to the ball or half ball.**

All information without guarantee, subject to change. The gluing instruction is not subject to any change service. Each current and valid from can be recalled at [www.kraiburg-relastec.com/euroflex/](http://www.kraiburg-relastec.com/euroflex/)